



PROMONTORY

KELOWNA, BC



PROMONTORY  
KELOWNA, BC

MODERN HOMES.  
MODERN LIVING.





PROMONTORY  
KELOWNA, BC

GOOD LIVING.  
GREAT LOCATION.

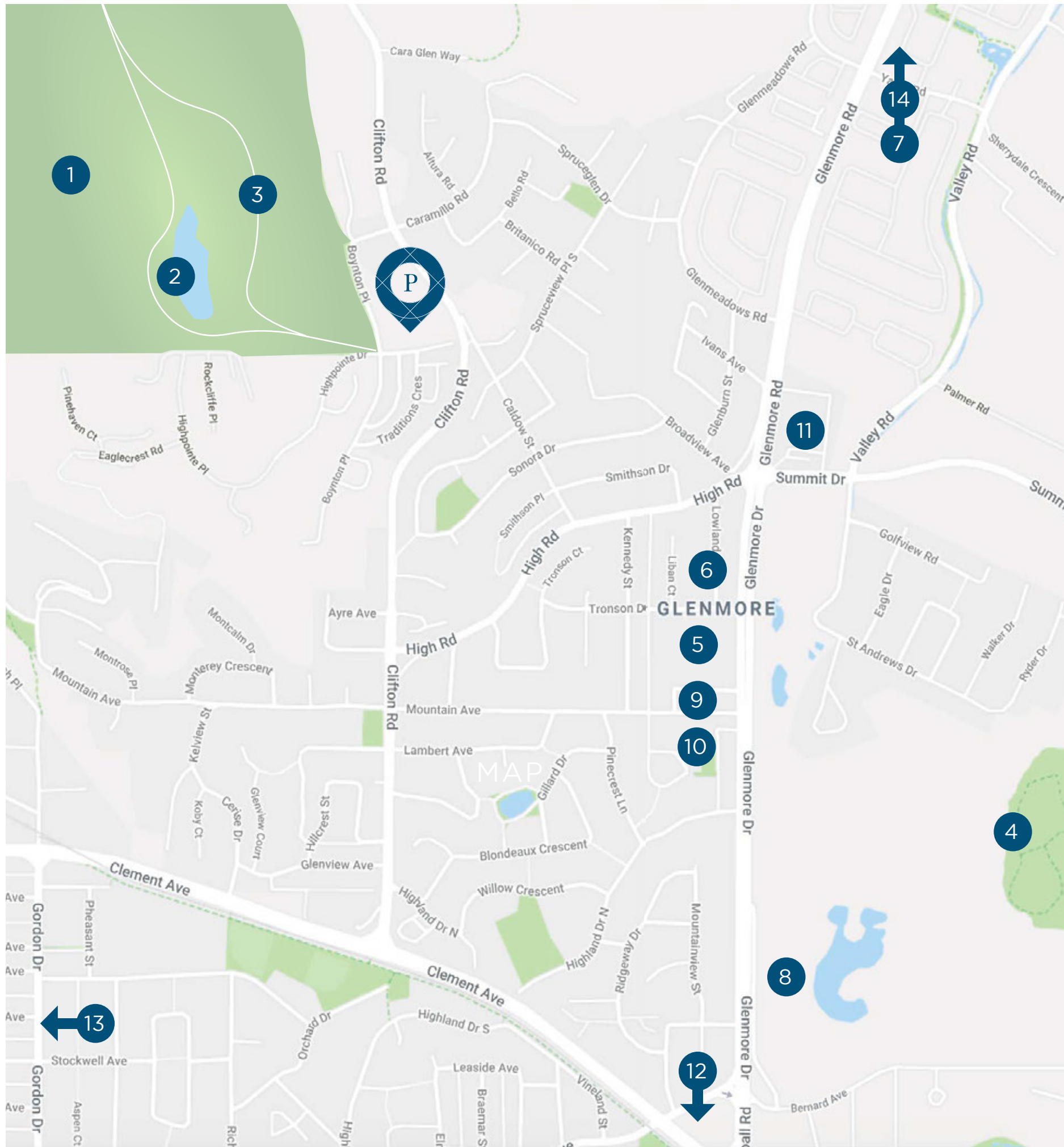
# SITE PLAN

| UNIT                        | DESCRIPTION                  | SQFT        |
|-----------------------------|------------------------------|-------------|
| <b>TOWNHOMES - 3 FLOORS</b> |                              |             |
| A                           | 3 BDRM, 3 BATH, 1 CAR GARAGE | 1362 - 1507 |
| B                           | 2 BDRM, 3 BATH, 2 CAR GARAGE | 1009 - 1024 |
| <b>STACKED TOWNHOMES</b>    |                              |             |
| C1                          | 1 BDRM, 1 BATH + DEN         | 609         |
| C2                          | 1 BDRM, 1 BATH               | 481 - 509   |
| C3                          | 2 BDRM, 1 BATH, 1 CAR GARAGE | 843 - 847   |
| D1                          | 2 BDRM, 2 BATH               | 781         |
| D2                          | 2 BDRM, 2 BATH               | 689         |
| D2A                         | 3 BDRM, 2 BATH               | 943         |
| D3                          | 2 BDRM, 2 BATH, 2 CAR GARAGE | 1031        |
| D3A                         | 2 BDRM, 2 BATH               | 1086        |



665 BOYNTON PLACE

685 BOYNTON PLACE



# THE NEIGHBOURHOOD

## PARKS

1. Knox Mountain Park
2. Kathleen Lake
3. Glenmore Ridge Trail
4. Dilworth Mountain Park

## SCHOOLS

5. UBC Glenmore Elementary
6. Lil' Dancing Owls Day Care
7. UBC Okanagan

## AMENITIES

8. Kelowna Golf & Country Club
9. Mac's Convenience Store
10. Makoto Sushi
11. Glenmore Liquor Store,  
Dyck's Pharmacy & Murray's Pizza
12. Apple Bowl Stadium
13. Downtown Kelowna (5 minutes)
14. Kelowna Airport (15 minutes)



PROMONTORY  
KELOWNA, BC



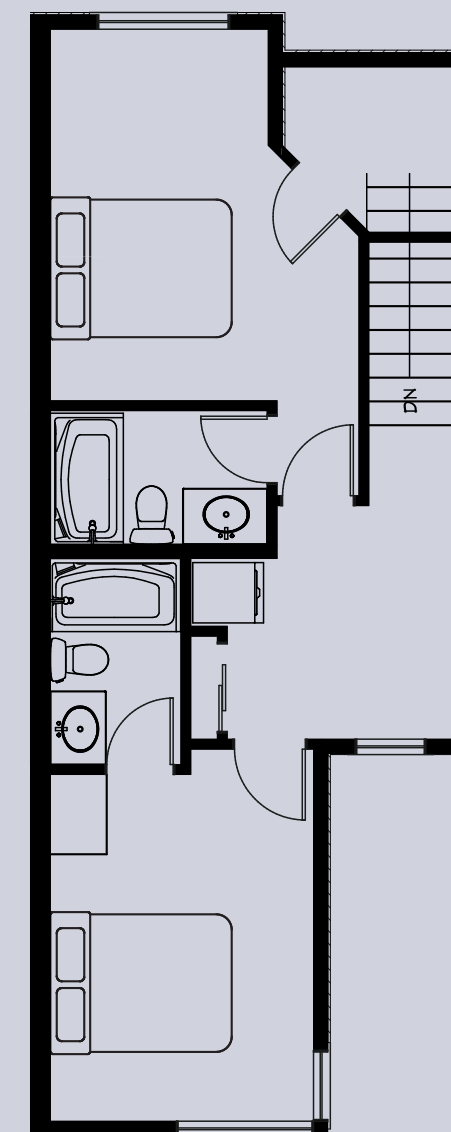
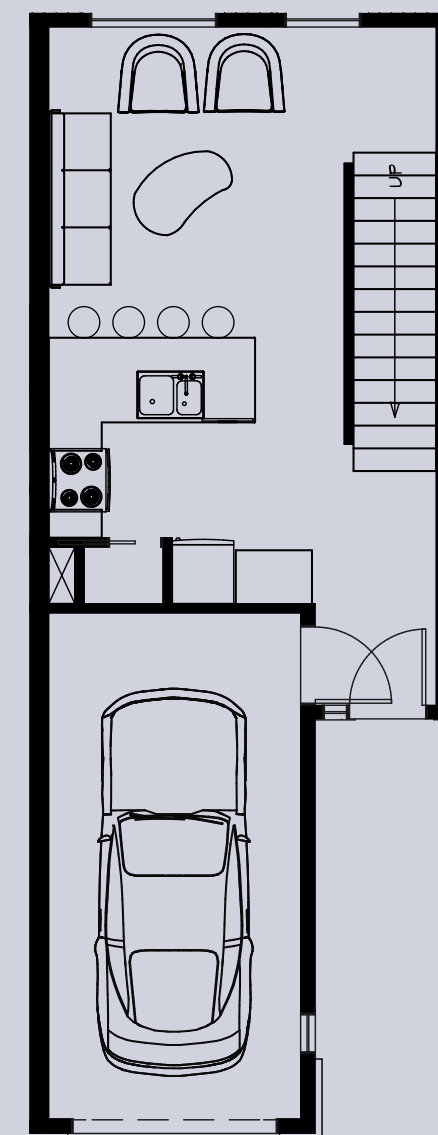
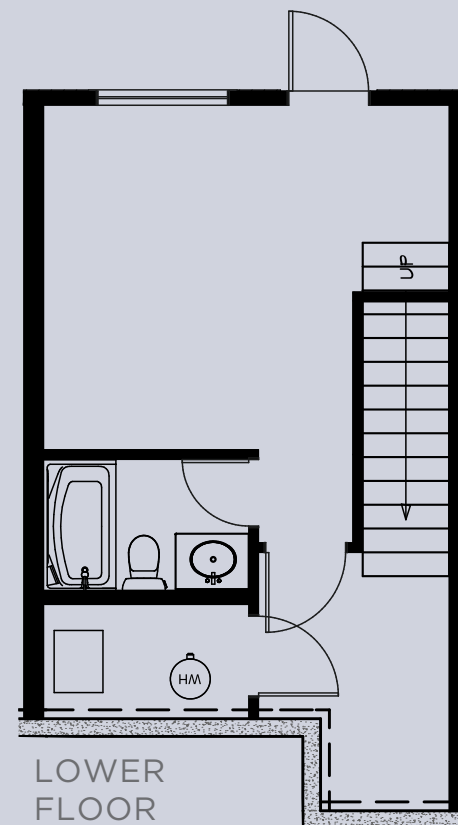
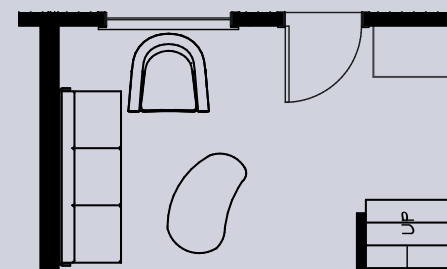
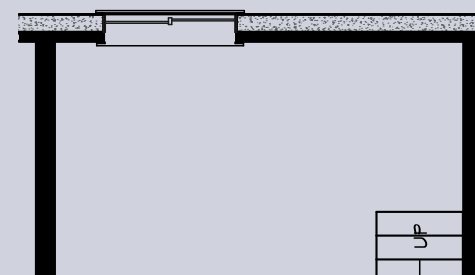


PROMONTORY  
KELOWNA, BC

# TOWNHOMES

A

3 BED, 3 BATH  
1 CAR GARAGE  
3 STOREY HOME  
1362 - 1507 SQFT





PROMONTORY  
KELOWNA, BC



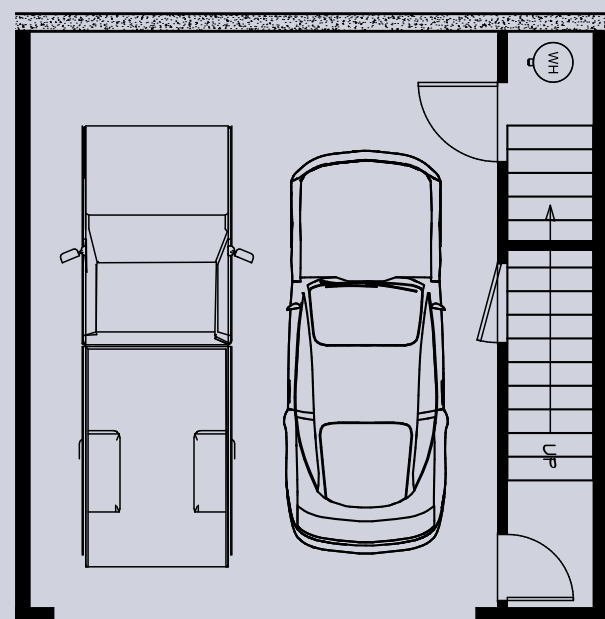


PROMONTORY  
KELOWNA, BC

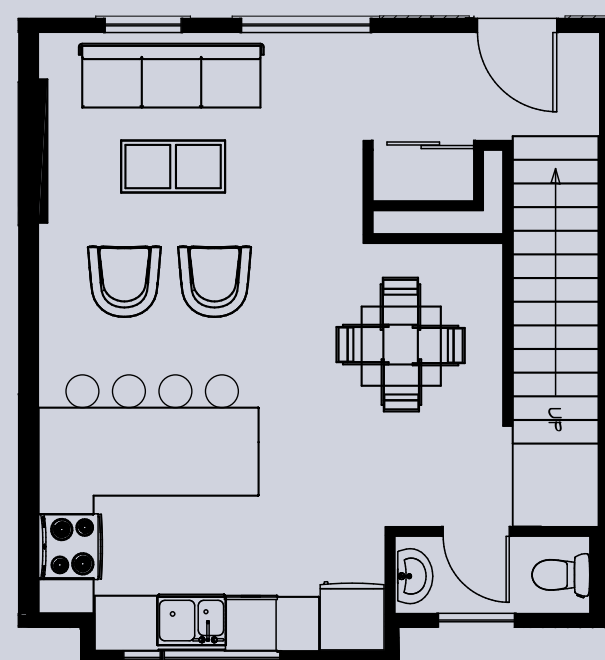
# TOWNHOMES

B

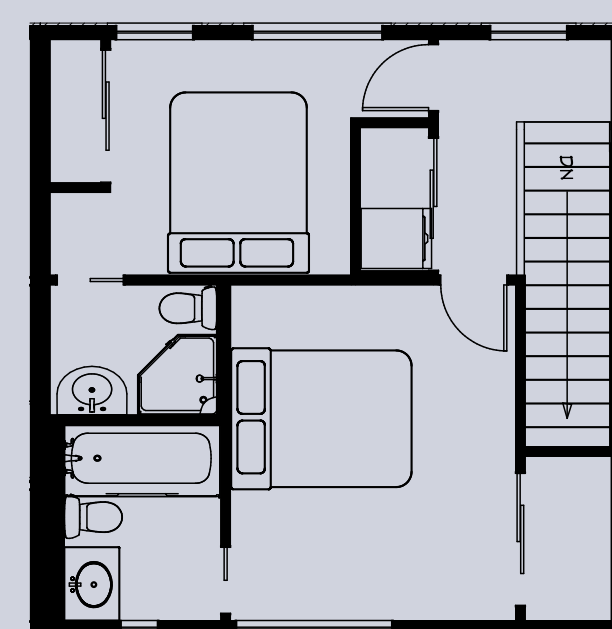
2 BED, 3 BATH  
2 CAR GARAGE  
3 STOREY HOME  
1009 - 1024 SQFT



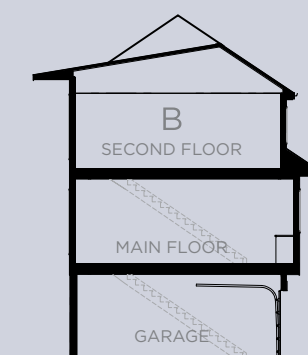
GARAGE



MAIN FLOOR



SECOND FLOOR





PROMONTORY  
KELOWNA, BC

# STACKED TOWNHOMES



ARTIST RENDERING ONLY



PROMONTORY  
KELOWNA, BC

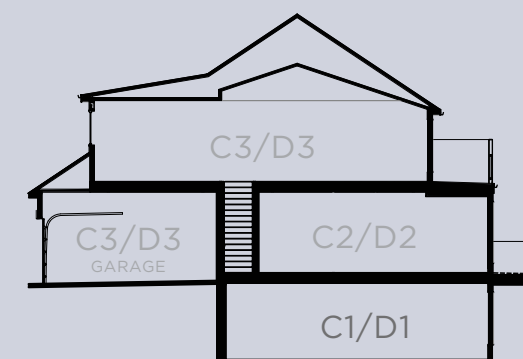
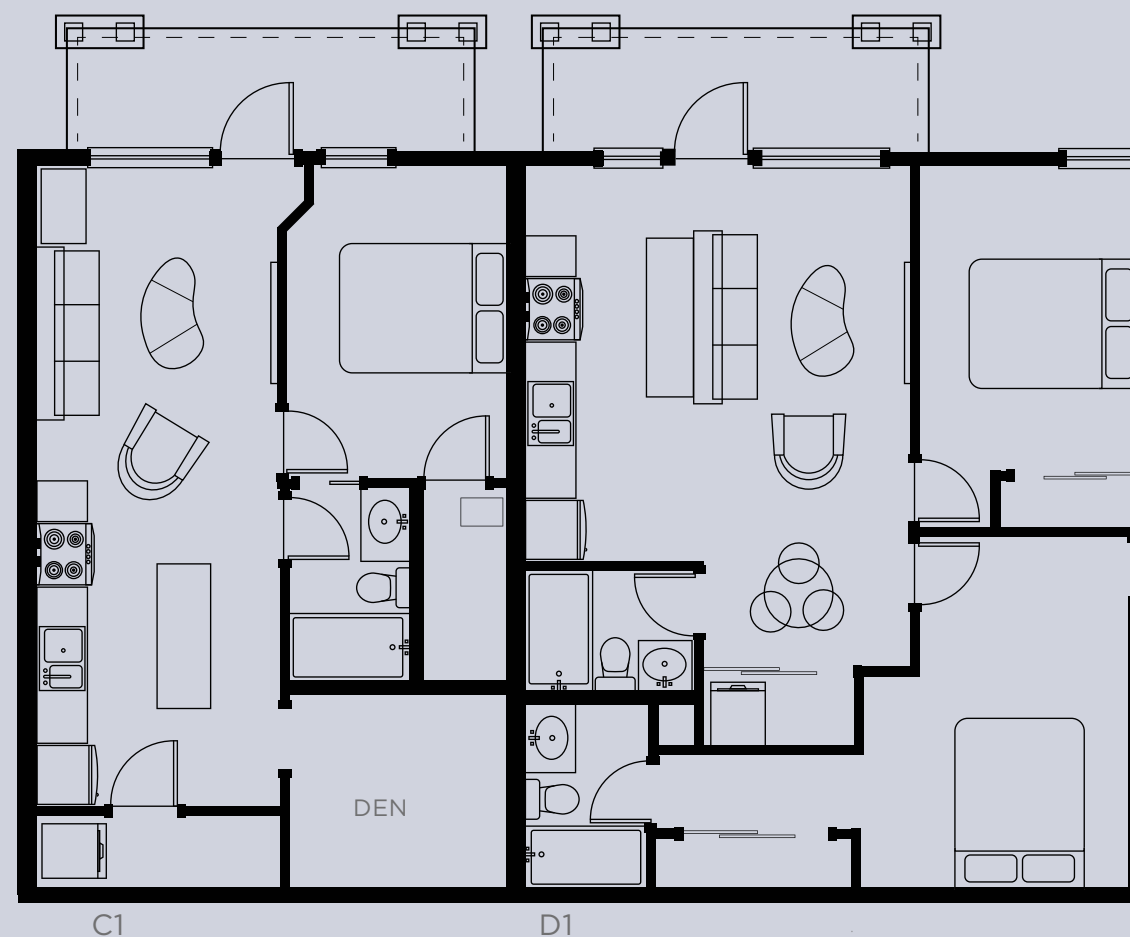
# STACKED TOWNHOMES

C1

1 BED, 1 BATH + DEN  
FIRST FLOOR  
609 SQFT

D1

2 BED, 2 BATH  
FIRST FLOOR  
781 SQFT





PROMONTORY  
KELOWNA, BC



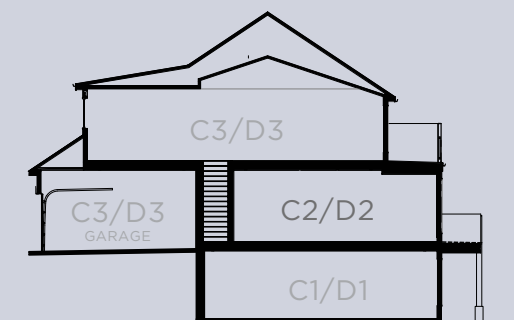
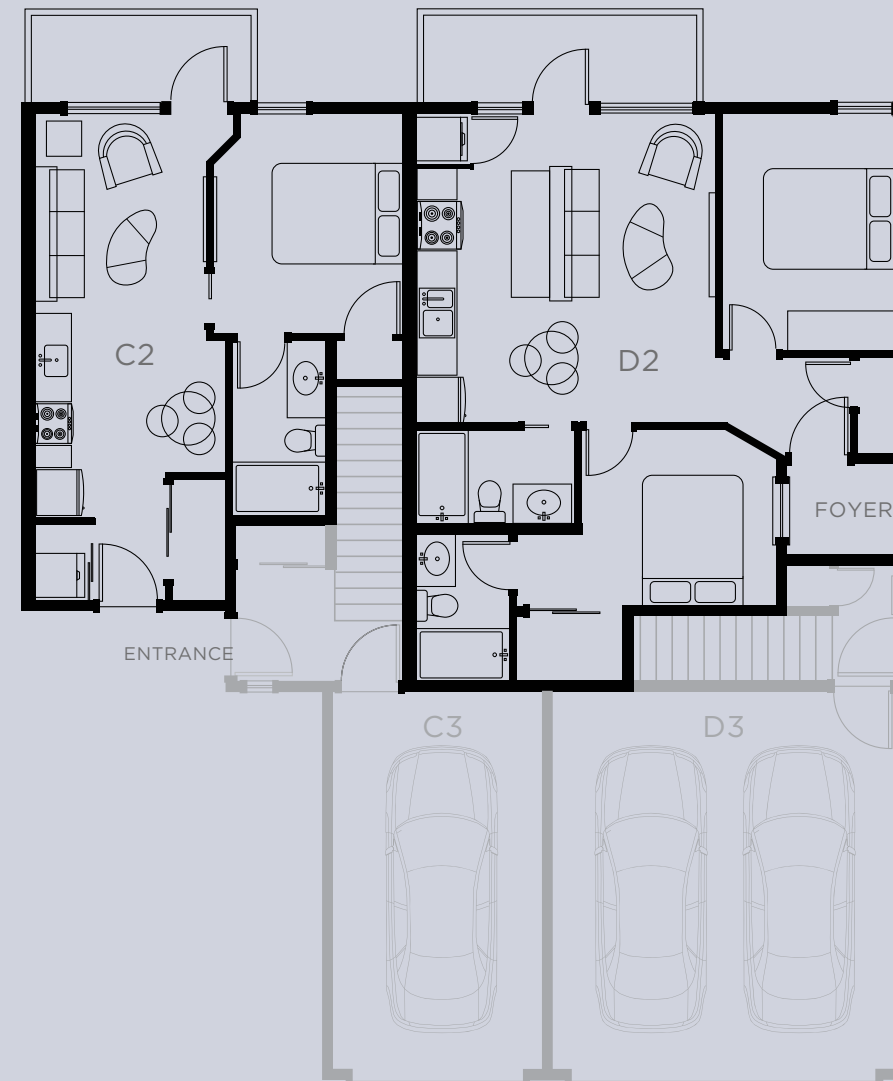
# STACKED TOWNHOMES

C2

1 BED, 1 BATH  
SECOND FLOOR  
481 - 509 SQFT

D2

2 BED, 2 BATH  
SECOND FLOOR  
689 SQFT





PROMONTORY  
KELOWNA, BC

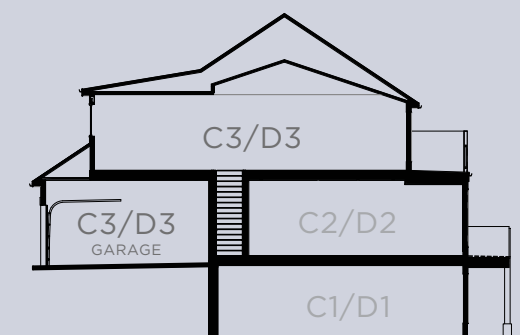
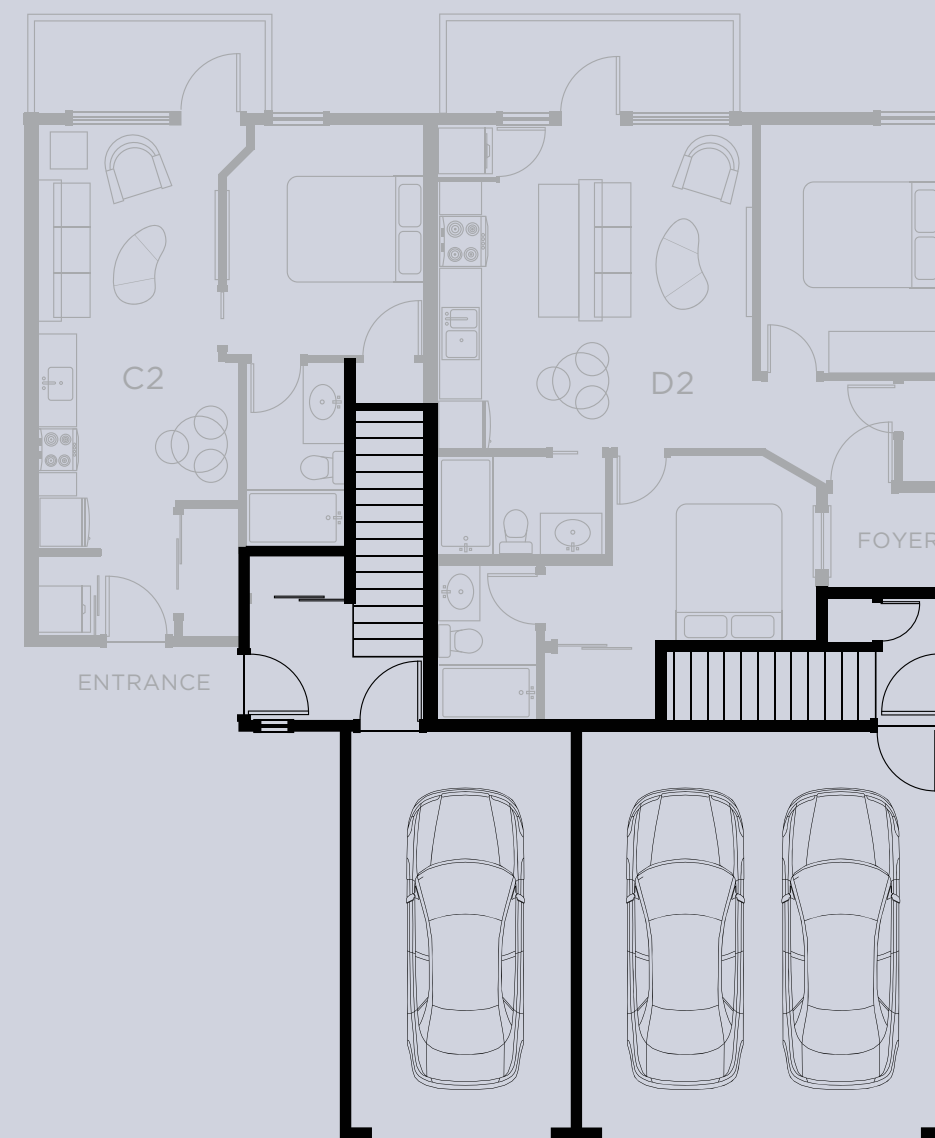
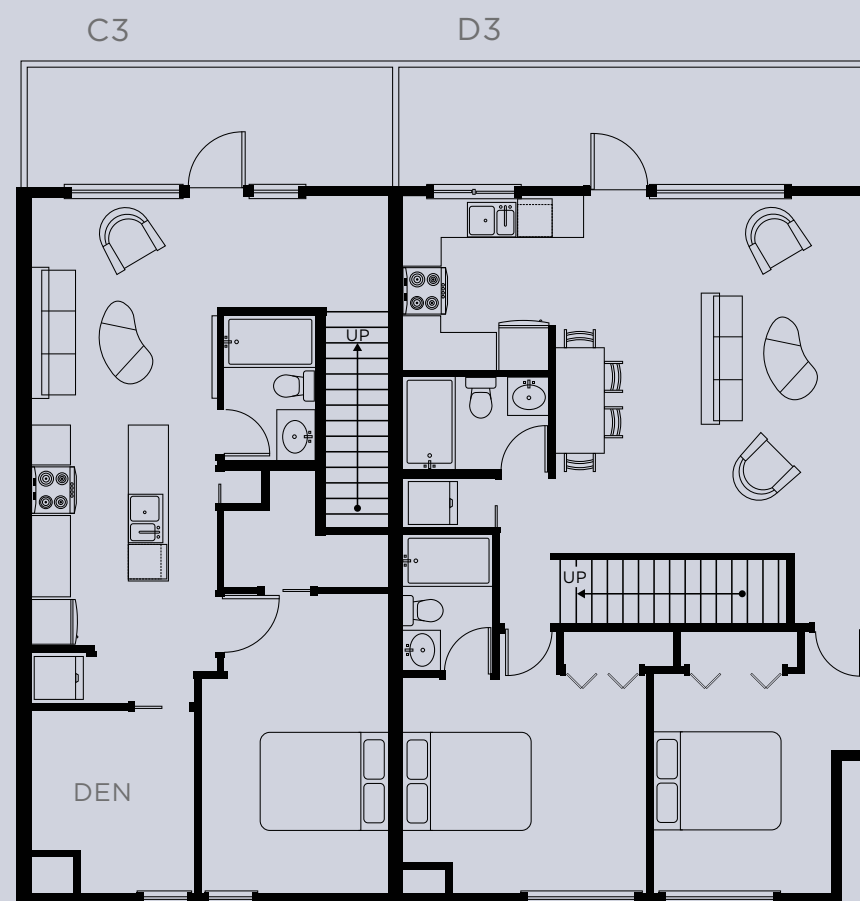
# STACKED TOWNHOMES

## C3

2 BED, 1 BATH  
1 CAR GARAGE  
THIRD FLOOR  
843 - 847 SQFT

## D3

2 BED, 2 BATH  
2 CAR GARAGE  
THIRD FLOOR  
1031 SQFT

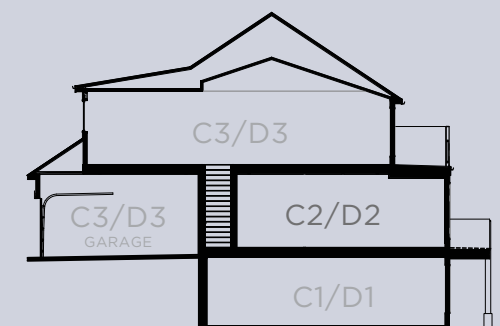
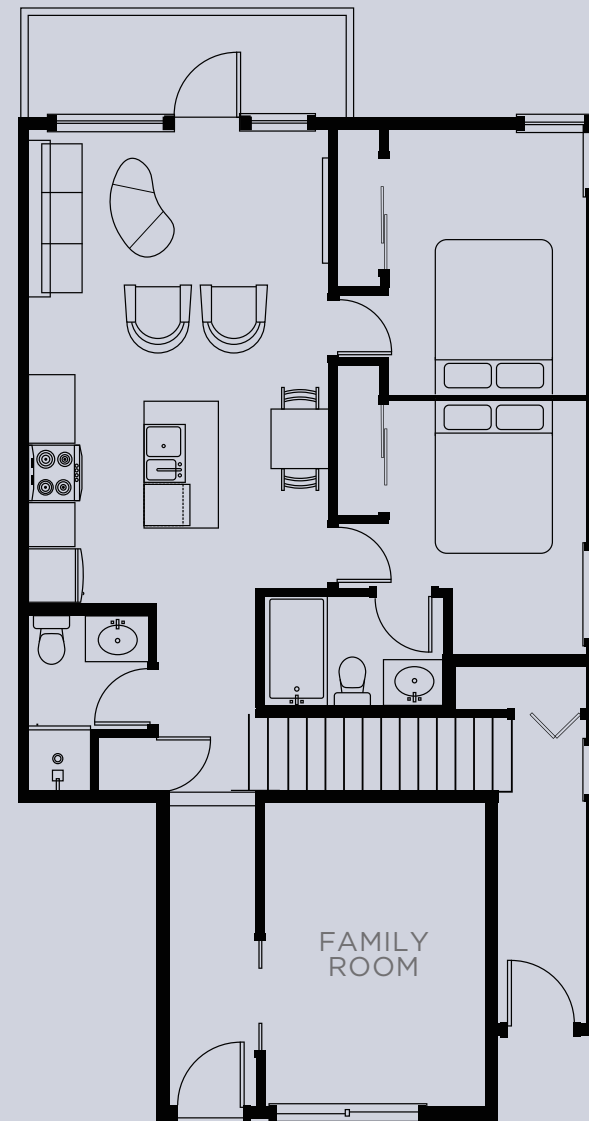




PROMONTORY  
KELOWNA, BC

# D2A

3 BED, 2 BATH  
SECOND FLOOR  
943 SQFT



## STACKED TOWNHOMES

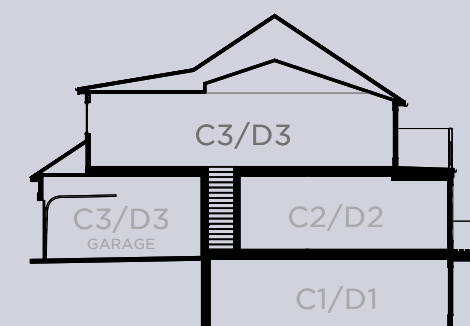
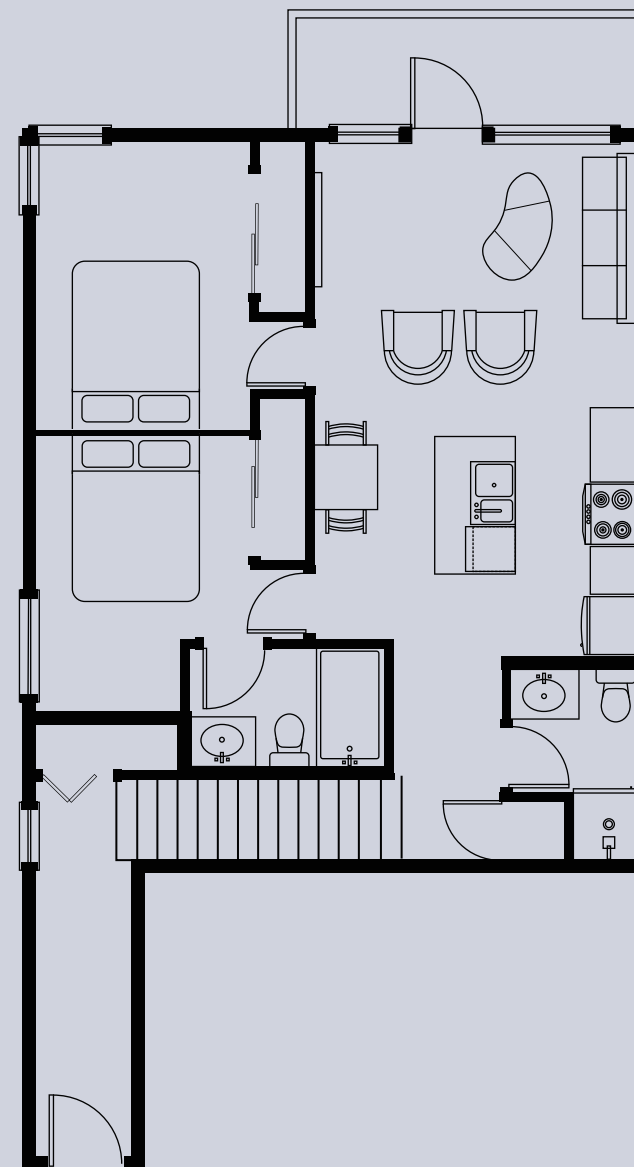


PROMONTORY  
KELOWNA, BC

# STACKED TOWNHOMES

D3A

2 BED, 2 BATH  
THIRD FLOOR  
1086 SQFT





PROMONTORY  
KELOWNA, BC



—  
THE PEAK



PROMONTORY  
KELOWNA, BC



—  
THE PEAK

## INTERIOR DESIGN SCHEME

- Kitchen Backsplash Tile - Cambridge White
- Kitchen Countertop - Grey Expo
- Kitchen Lower Millwork - White Flat Panel
- Kitchen Upper Millwork & Island - Kinabula Teak
- Bathroom Millwork - Kinabula Teak
- Bathroom Countertop - Caesarstone Clamshell
- Bathroom Wall Tile - Chamonix White Matte
- Bathroom Accent Wall Tile - Navy Matte
- Luxury Vinyl Plank Flooring Throughout - Bora Bora
- Wall Colour - Pale Oak
- Case & Base Colour - Baby's Breath

## STANDARD FEATURES & FINISHES

- Whirlpool® 28" Wide Top-Freezer Refrigerator 16 cu. ft
- Whirlpool® 5.3 cu. ft. Freestanding Electric Range with Adjustable Self-Cleaning
- Whirlpool® Heavy-Duty Dishwasher with 1-Hour Wash Cycle
- Whirlpool® 5.0 cu.ft I.E.C. Closet-Depth Front Load Washer with Intuitive Controls
- Whirlpool® 7.4 cu. ft. Front Load Electric Dryer with Intuitive Touch Controls
- Danze Plumbing Fixture
- Gerber Kitchen Faucet
- Kitchen Sink - Stainless Steel Double Bowl Sink



PROMONTORY  
KELOWNA, BC



—  
THE RIDGE



PROMONTORY  
KELOWNA, BC



—  
THE RIDGE

## INTERIOR DESIGN SCHEME

- Kitchen Backsplash Tile - White
- Kitchen Countertop - Blanco Maple
- Kitchen Lower Millwork - White Flat Pane
- Kitchen Upper Millwork & Island - Stinson Trail
- Bathroom Millwork - Stinson Trail
- Bathroom Countertop - Caesarstone Blizzard
- Bathroom Wall Tile - Arctic White Matte
- Bathroom Accent Wall Tile - Grey Matte
- Luxury Vinyl Plank Flooring Throughout - Makalu
- Wall Colour - Metro Gray
- Case & Base Colour - Baby's Breath

## STANDARD FEATURES & FINISHES

- Whirlpool® 28" Wide Top-Freezer Refrigerator 16 cu. ft
- Whirlpool® 5.3 cu. ft. Freestanding Electric Range with Adjustable Self-Cleaning
- Whirlpool® Heavy-Duty Dishwasher with 1-Hour Wash Cycle
- Whirlpool® 5.0 cu.ft I.E.C. Closet-Depth Front Load Washer with Intuitive Controls
- Whirlpool® 7.4 cu. ft. Front Load Electric Dryer with Intuitive Touch Controls
- Danze Plumbing Fixture
- Gerber Kitchen Faucet
- Kitchen Sink - Stainless Steel Double Bowl Sink



PROMONTORY  
KELOWNA, BC



[CYNERRAGROUP.COM](http://CYNERRAGROUP.COM)